

*J.R. Parrish*

COMMERCIAL REAL ESTATE

[jrparrish.com](http://jrparrish.com)

MAIN OFFICE  
831.476.2222

FAX  
831.464.5818

9000 Soquel Ave  
Suite 200  
Santa Cruz, CA 95062

FOR MORE INFORMATION  
CONTACT EXCLUSIVE  
LISTING AGENTS

Randy Parker  
831.476.2222 x103  
831.234.0702 cell  
[rpark101@gmail.com](mailto:rpark101@gmail.com)  
DRE# 00975223

# FOR LEASE OFFICE / R&D BUILDING

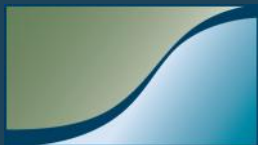


10 VICTOR SQUARE • SCOTTS VALLEY, CA

## PROPERTY FEATURES

- Suite sizes:  $\pm$  4,500SF - 20,000SF
- Prime Scotts Valley Location
- Highly visible building
- Good mix of office/R&D
- On-site parking ratio 4/1000
- Easy freeway access
- Tenant improvement available

**\$1.10 NNN**



*JR Parrish*

COMMERCIAL REAL ESTATE

[jrparish.com](http://jrparish.com)

MAIN OFFICE  
831.476.2222

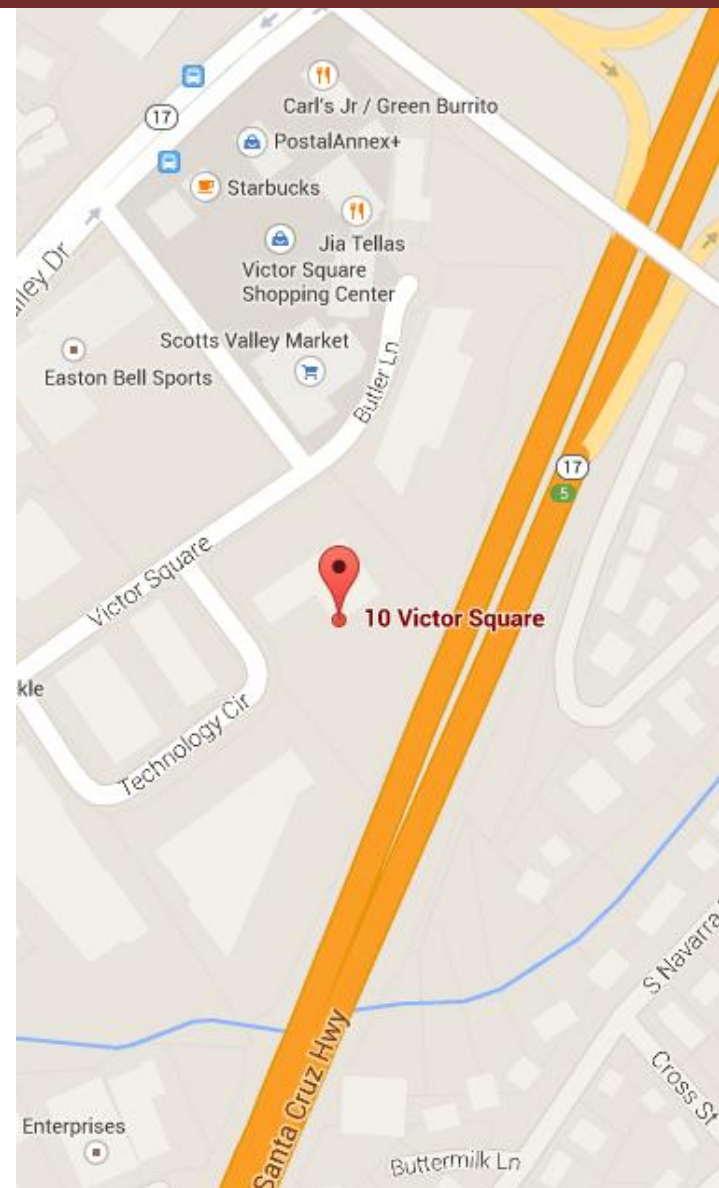
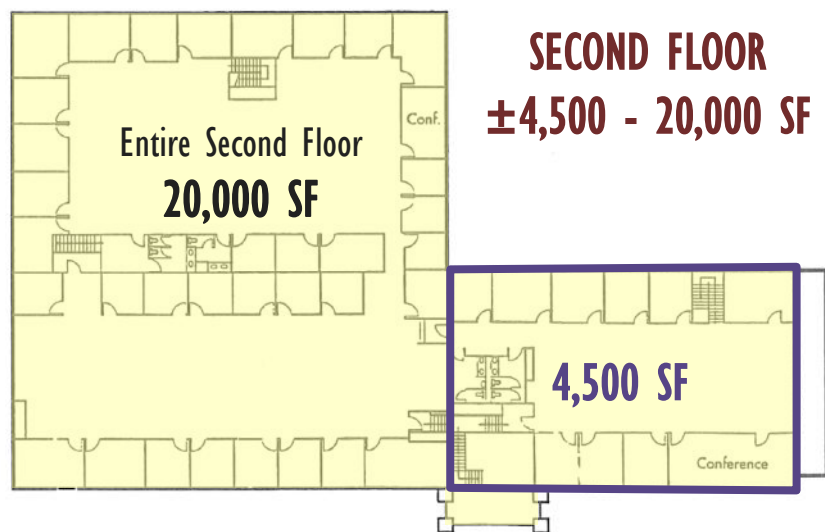
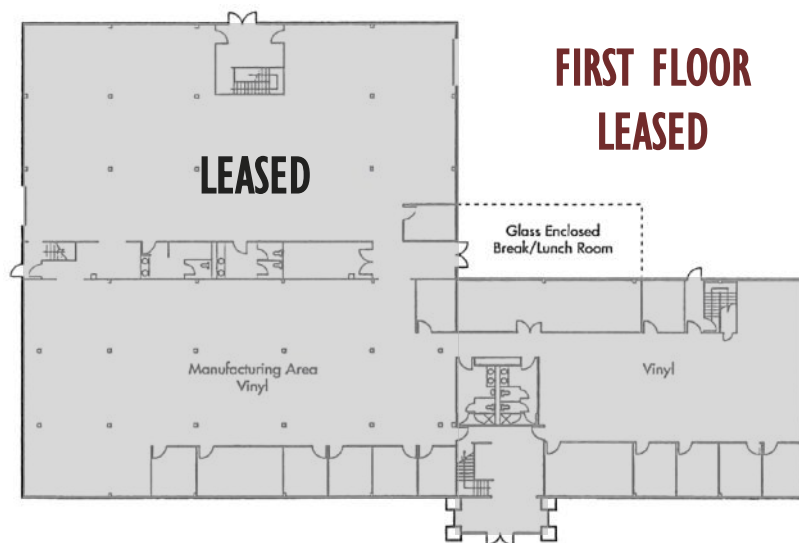
FAX  
831.464.5818

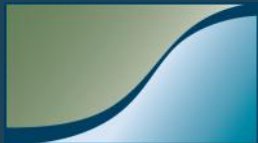
9000 Soquel Ave  
Suite 200  
Santa Cruz, CA 95062

FOR MORE INFORMATION  
CONTACT EXCLUSIVE  
LISTING AGENTS

Randy Parker  
831.476.2222 x103  
831.234.0702 cell  
rpark101@gmail.com  
DRE# 00975223

# FLOOR PLAN





*JR Parrish*

COMMERCIAL REAL ESTATE

[jrparrish.com](http://jrparrish.com)

MAIN OFFICE  
831.476.2222

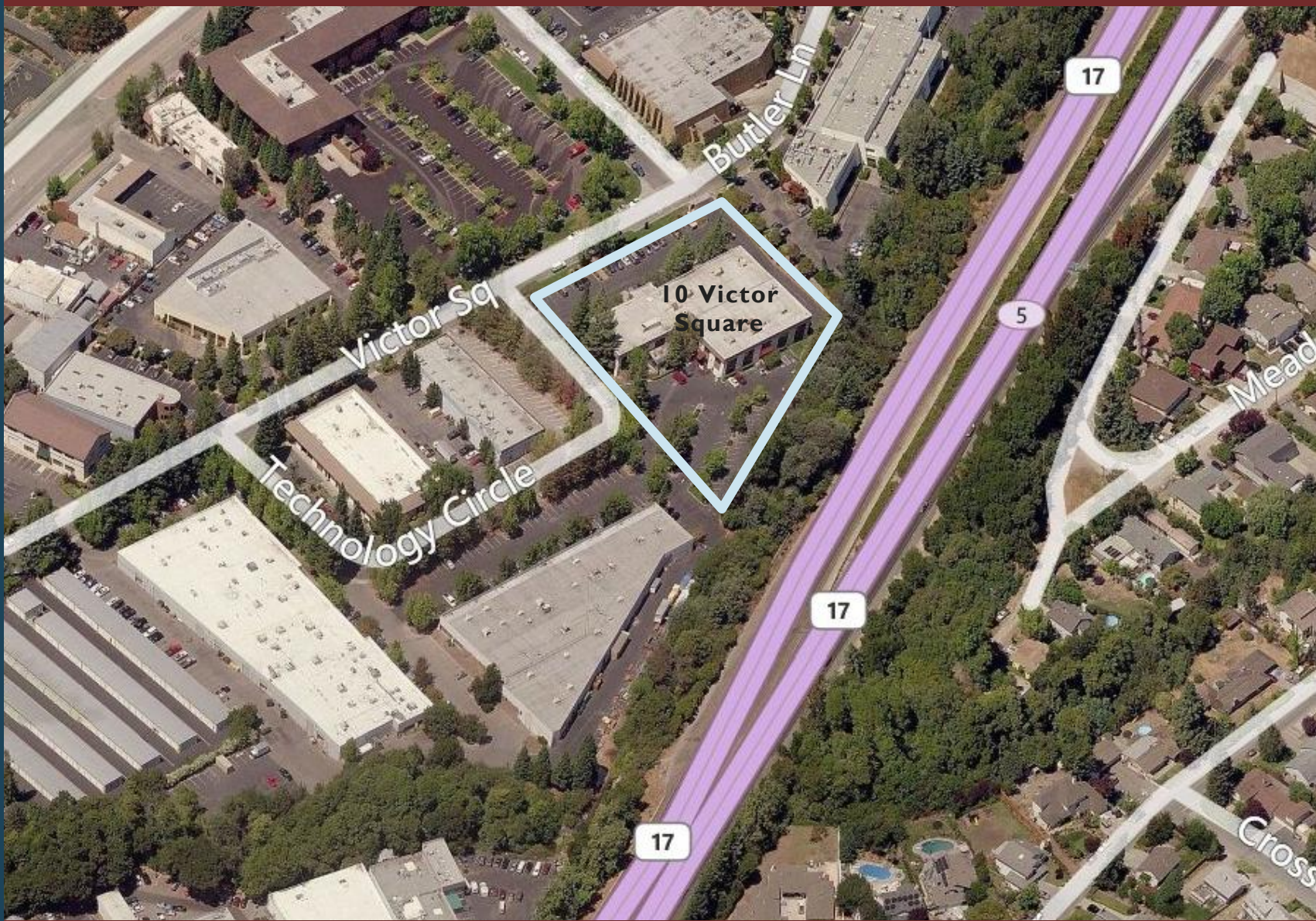
FAX  
831.464.5818

9000 Soquel Ave  
Suite 200  
Santa Cruz, CA 95062

FOR MORE INFORMATION  
CONTACT EXCLUSIVE  
LISTING AGENTS

Randy Parker  
831.476.2222 x103  
831.234.0702 cell  
[rpark101@gmail.com](mailto:rpark101@gmail.com)  
DRE# 00975223

AERIAL



JR PARRISH COMMERCIAL REAL ESTATE • [jrparrish.com](http://jrparrish.com)