



J.R. Parrish

COMMERCIAL REAL ESTATE

jrparrish.com

MAIN OFFICE
831.476.2222

FAX
831.464.5818

9000 Soquel Ave
Suite 200
Santa Cruz, CA 95062

FOR MORE INFORMATION
CONTACT EXCLUSIVE
LISTING AGENTS

Matt Shelton
831.476.2222 x106
831.247.1510 cell
matt@jrparrish.com
CalBRE# 00879054

Rachael Shelton
831.588.8383
rachael@jrparrish.com
CalBRE# 01916810

FOR SALE TWO BUILDING OFFICE COMPLEX



Ideal for Owner User

2745 PORTER STREET • SOQUEL, CA

- C-2 Zoning
- Front Building +/- 900 sf. Configured with 3 offices
- Rear Building +/- 400 sf. Improved storage space
- Half a block from Soquel Drive on Porter Street
- Currently leased, with no more than 9 months remaining on the longest lease
- **Priced at \$750,000**



JR Parrish

COMMERCIAL REAL ESTATE

jrparrish.com

MAIN OFFICE
831.476.2222

FAX
831.464.5818

9000 Soquel Ave
Suite 200
Santa Cruz, CA 95062

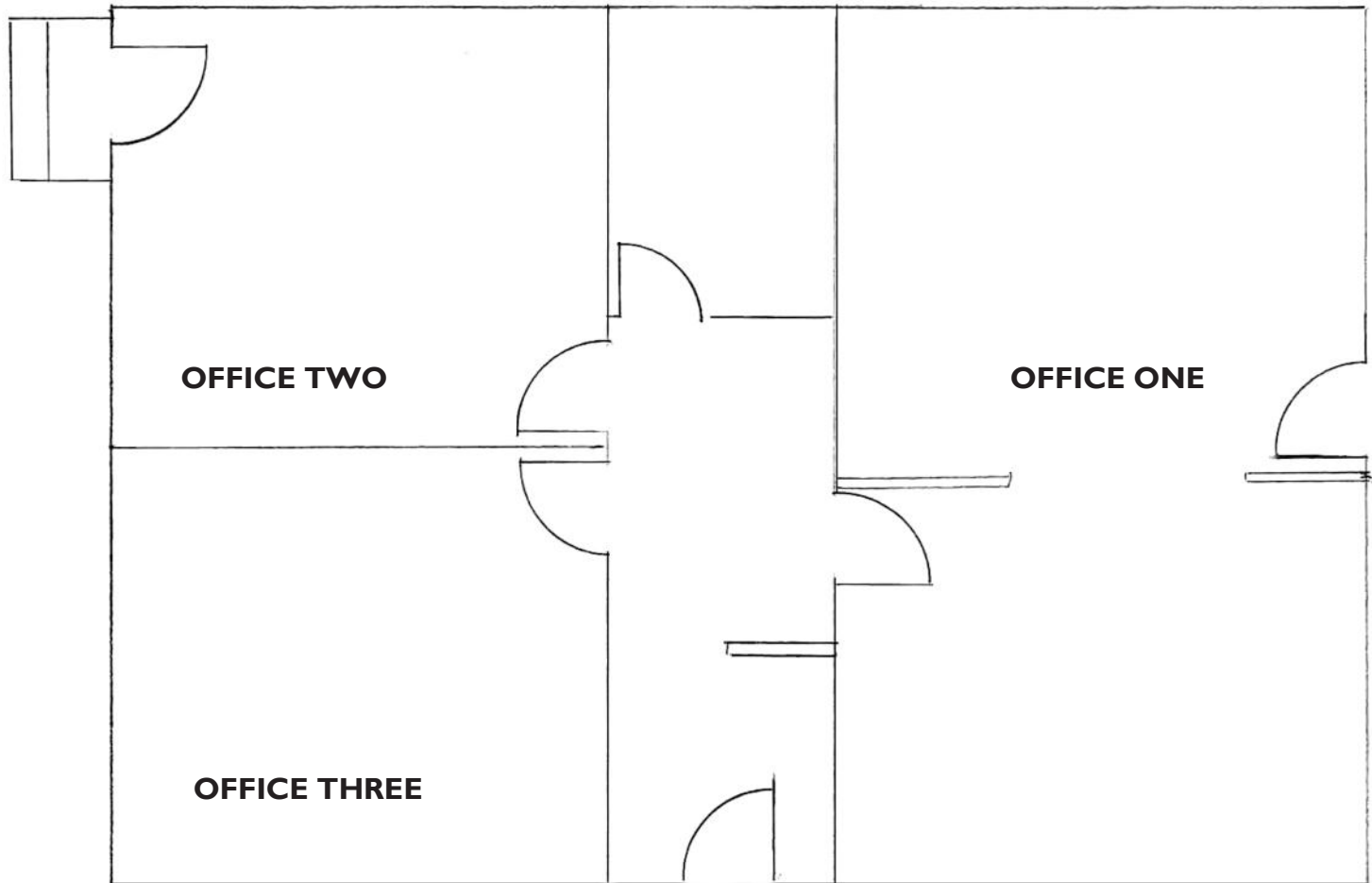
FOR MORE INFORMATION
CONTACT EXCLUSIVE
LISTING AGENTS

Matt Shelton
831.476.2222 x106
831.247.1510 cell
matt@jrparrish.com
CalBRE# 00879054

Rachael Shelton
831.588.8383
rachael@jrparrish.com
CalBRE# 01916810

FLOOR PLANS 2745 PORTER STREET

APPROX 900 SF



JR PARRISH COMMERCIAL REAL ESTATE • jrparrish.com



JR Parrish

COMMERCIAL REAL ESTATE

jrparish.com

MAIN OFFICE
831.476.2222

FAX
831.464.5818

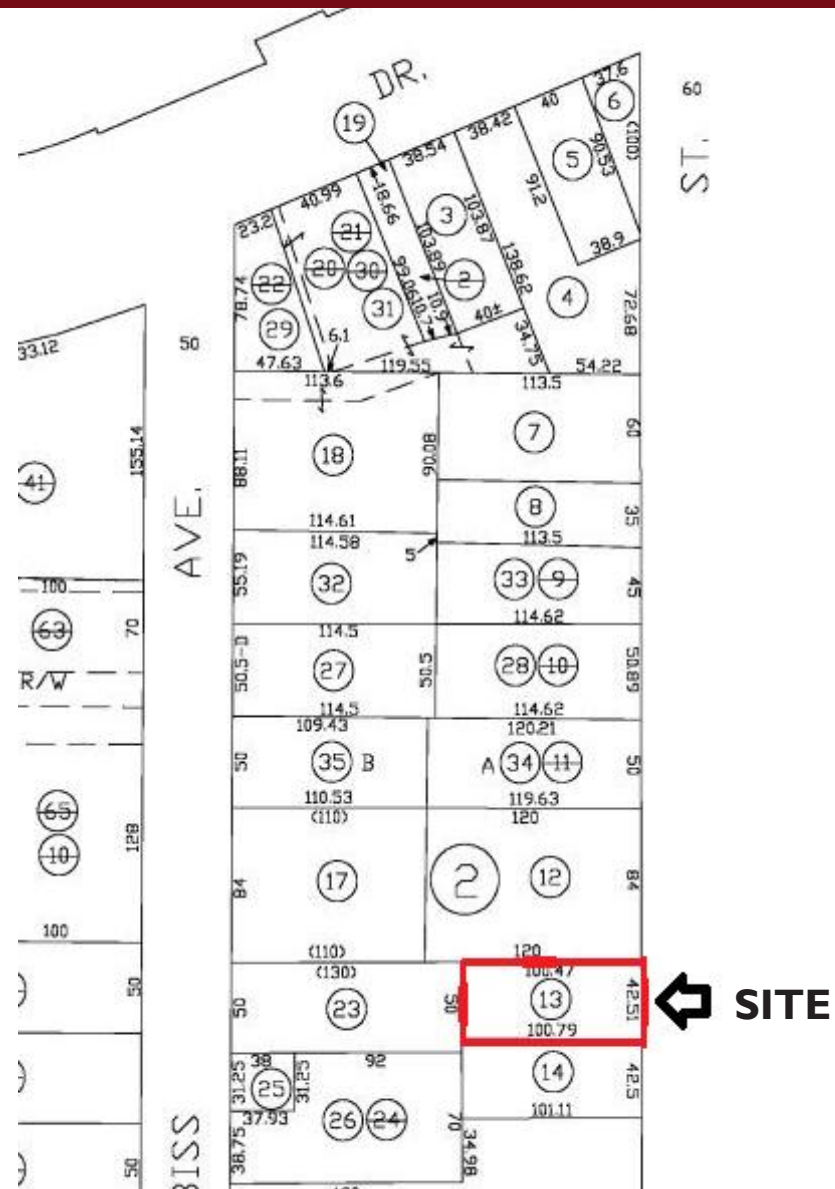
9000 Soquel Ave
Suite 200
Santa Cruz, CA 95062

FOR MORE INFORMATION
CONTACT EXCLUSIVE
LISTING AGENTS

Matt Shelton
831.476.2222 x106
831.247.1510 cell
matt@jrparish.com
CalBRE# 00879054

Rachael Shelton
831.588.8383
rachael@jrparish.com
CalBRE# 01916810

PARCLE MAP 2745 PORTER STREET



PHOTOS 2745 PORTER STREET



JR Parrish

COMMERCIAL REAL ESTATE

jrparrish.com

MAIN OFFICE
831.476.2222

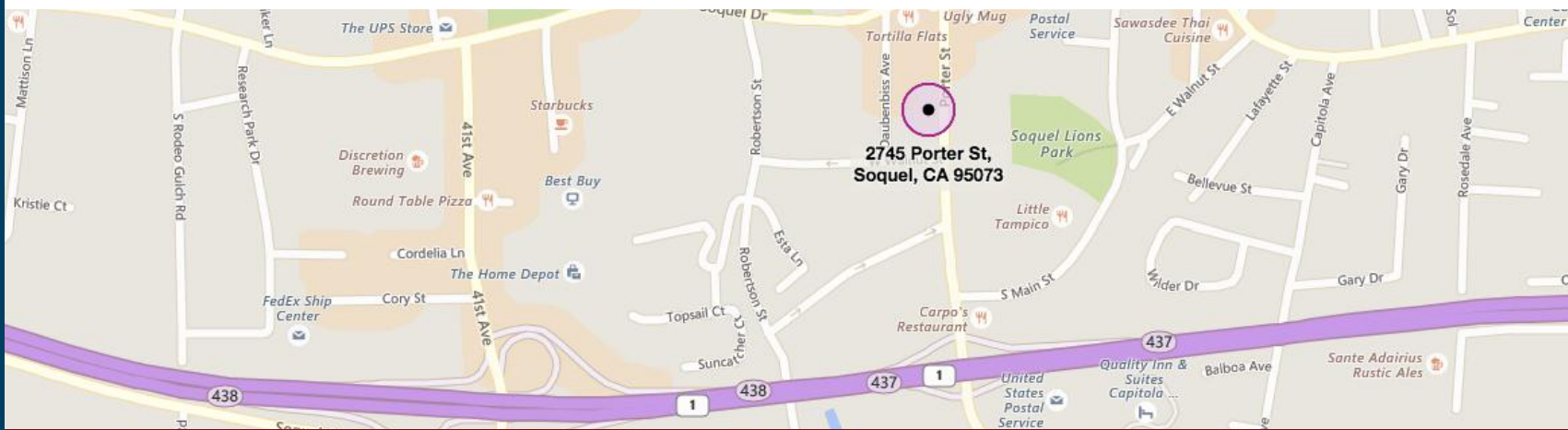
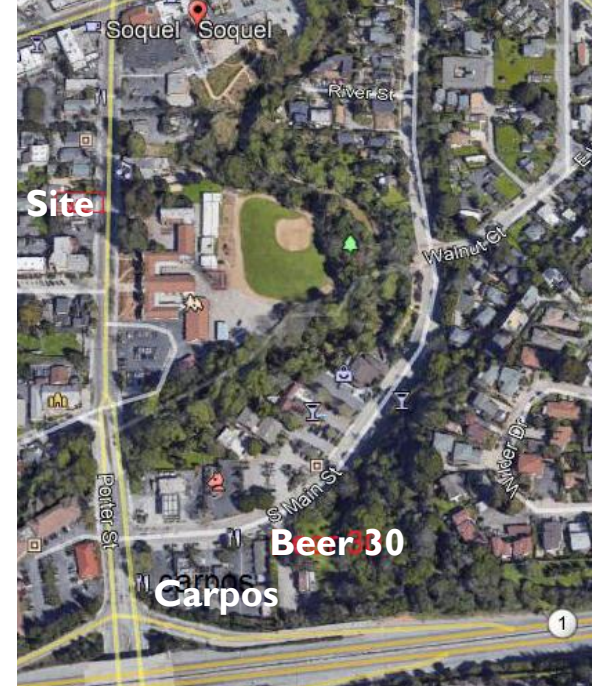
FAX
831.464.5818

9000 Soquel Ave
Suite 200
Santa Cruz, CA 95062

FOR MORE INFORMATION
CONTACT EXCLUSIVE
LISTING AGENTS

Matt Shelton
831.476.2222 x106
831.247.1510 cell
matt@jrparrish.com
CalBRE# 00879054

Rachael Shelton
831.588.8383
rachael@jrparrish.com
CalBRE# 01916810



JR PARRISH COMMERCIAL REAL ESTATE • jrparrish.com