



COMMERCIAL REAL ESTATE

jrparrish.com

MAIN OFFICE
831.476.2222
FAX
831.464.5818

9000 Soquel Ave
Suite 200
Santa Cruz, CA 95062

FOR MORE INFORMATION
CONTACT EXCLUSIVE
LISTING AGENT

Carol Lezin
831.247.2610 cell
clezin@jrparrish.com
DRE# 00878937

FOR SALE COMMERCIAL BUILDING



709 MISSION STREET • SANTA CRUZ

- **\$1,350,000**
- Two buildings on 14,680 SF site
- Large backyard is flat, usable and private
- Zoned PA; APN#:006-412-13
- Excellent condition
- 3,019 SF Craftsman-Style commercial property + 600 SF building and 250 SF unfinished basement
- Good for an owner user or investor or office use



J.R. Parrish

COMMERCIAL REAL ESTATE

jrparrish.com

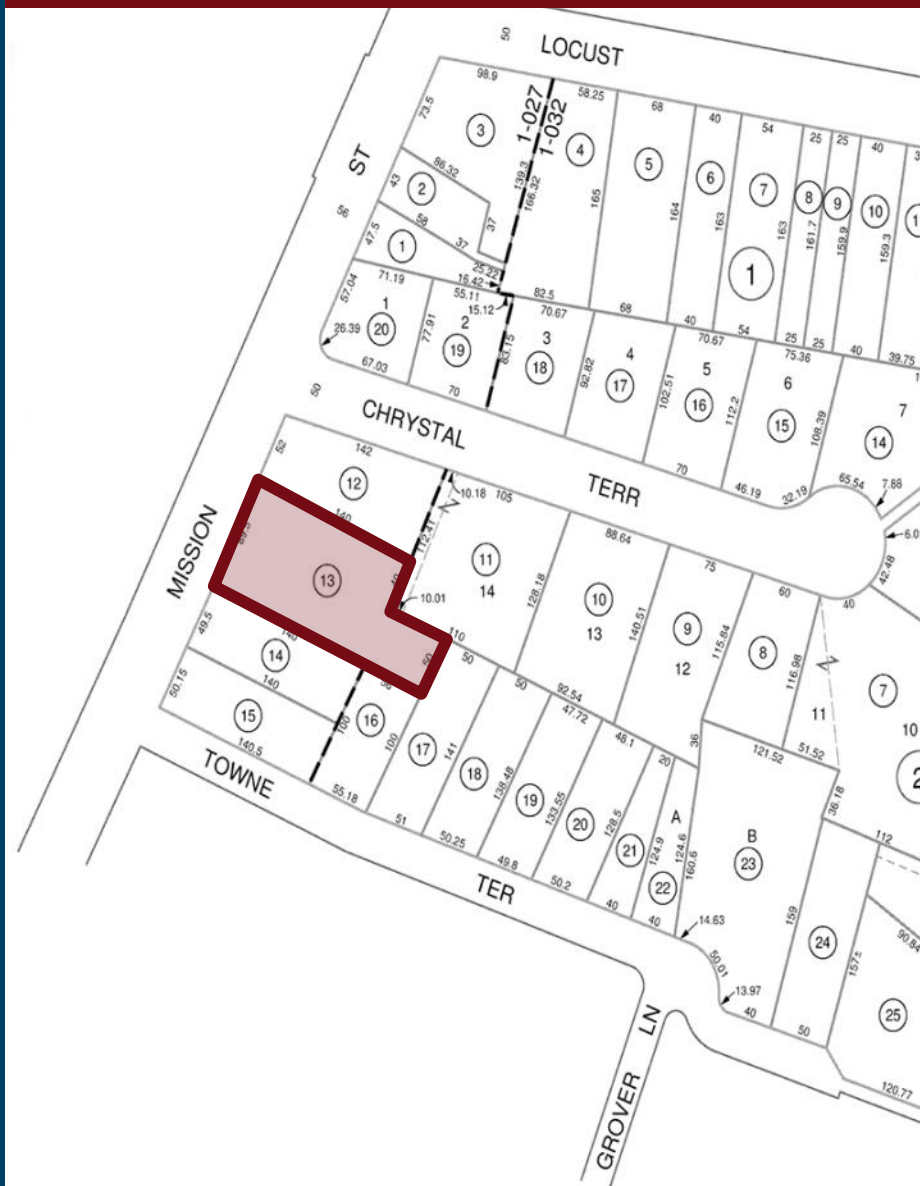
MAIN OFFICE
831.476.2222
FAX
831.464.5818

9000 Soquel Ave
Suite 200
Santa Cruz, CA 95062

FOR MORE INFORMATION
CONTACT EXCLUSIVE
LISTING AGENT

Carol Lezin
831.247.2610 cell
clezin@jrparrish.com
DRE# 00878937

PARCEL MAP



Main Property

- Two-story main building
- Built in 1914, updated, and well maintained over the years
- Excellent overall condition
- Eleven rooms (4 downstairs + a full kitchen) and (7 upstairs)
- Built-in cabinets and some original stained glass
- Additional 260+ SF of unfinished basement
- Access front and rear to both buildings
- 1.5 bathrooms

600 SF Building

- Located adjacent to main building
- Slab
- Wall heater

JR PARRISH COMMERCIAL REAL

PHOTOS



J.R. Parrish

COMMERCIAL REAL ESTATE

jrparrish.com

MAIN OFFICE
831.476.2222

FAX
831.464.5818

9000 Soquel Ave
Suite 200
Santa Cruz, CA 95062

FOR MORE INFORMATION
CONTACT EXCLUSIVE
LISTING AGENT

Carol Lezin
831.247.2610 cell
clezin@jrparrish.com
DRE# 00878937



JR PARRISH COMMERCIAL REAL ESTATE • jrparrish.com