

# FOR LEASE Office Space in Westridge Business Park

159 Westridge Drive • Watsonville CA



COMMERCIAL REAL ESTATE

For More Information Contact Exclusive Agent:

**Gregg Walsh, SIOR**

831.476.2222 Ext. 102

831.252.2585 Cell

gsw200@aol.com

DRE# 01013102

- 856 S.F.
- High Identity Park & Building
- 4/1000 Parking
- Easy Access to Highway 1 & Area's Best Amenities

- Walk to Gold's Gym
- Excellent Opportunity to Locate Your Business in Area's Premiere Business Park

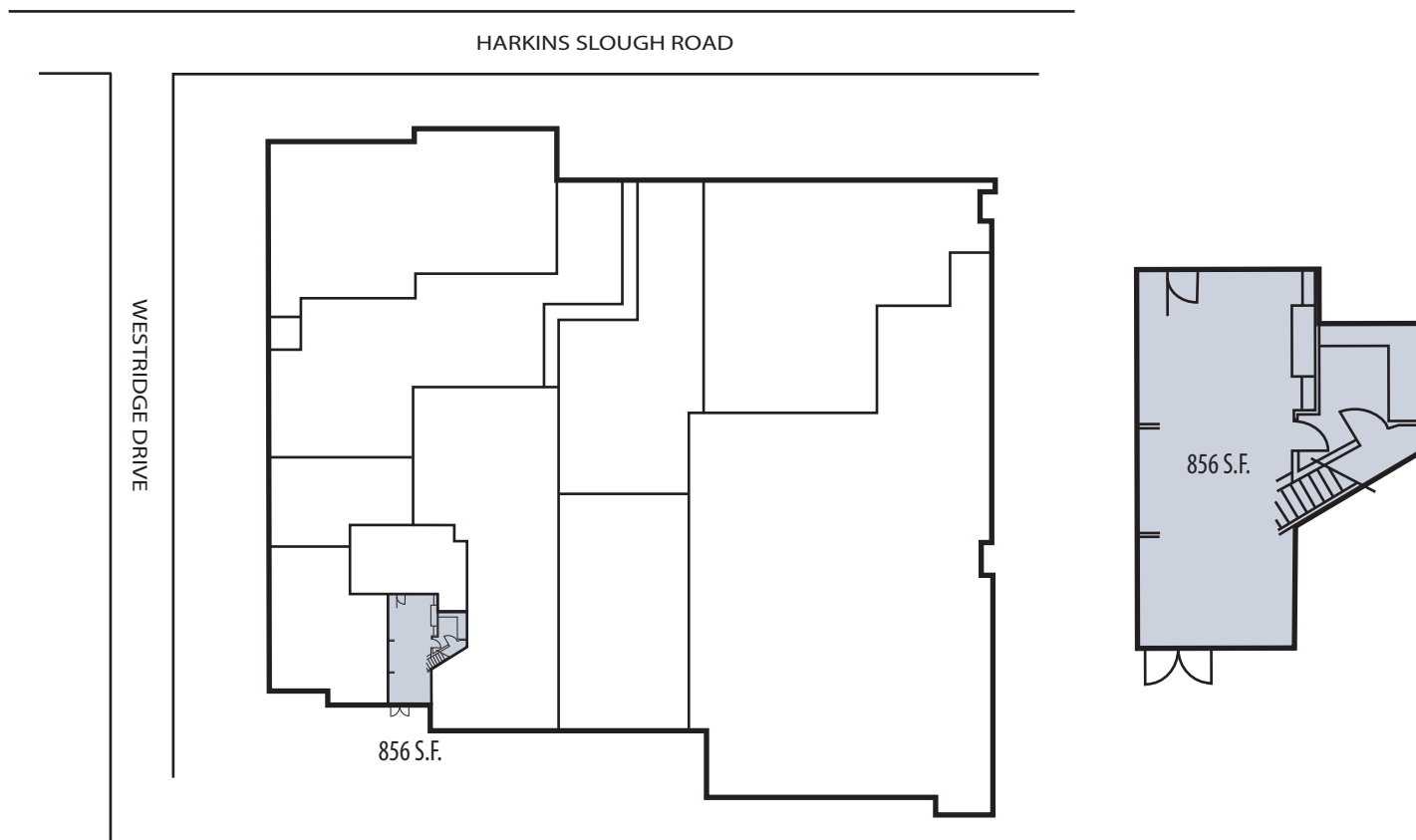
**Priced At: \$1.55 NNN PSF**

9000 SOQUEL AVE SUITE 200 SANTA CRUZ CA 95062 FAX 831.316.7988

[www.jrparrish.com](http://www.jrparrish.com)

# FOR LEASE Office Space in Westridge Business Park

159 Westridge Drive • Watsonville CA



COMMERCIAL REAL ESTATE

For More Information Contact Exclusive Agent:

**Gregg Walsh, SIOR**

831.476.2222 Ext. 102

831.252.2585 Cell

gsw200@aol.com

DRE# 01013102

9000 SOQUEL AVE SUITE 200 SANTA CRUZ CA 95062 FAX 831.316.7988

[www.jrparrish.com](http://www.jrparrish.com)