



COMMERCIAL REAL ESTATE

jrparrish.com

MAIN OFFICE
831.476.2222

FAX
831.464.5818

9000 Soquel Ave
Suite 200
Santa Cruz, CA 95062

FOR LEASE DENTAL OFFICE BUILDING

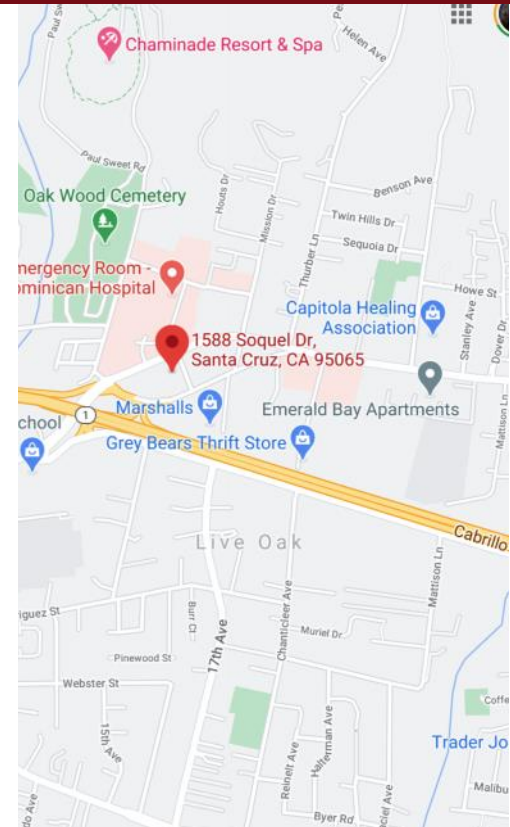


1588 SOQUEL DRIVE, SANTA CRUZ CA

PROPERTY HIGHLIGHTS

- 1,086 SF
- Move in dental office in excellent condition
- Located across from Dominican Hospital
- Mid County location with easy freeway access
- Onsite parking
- Three operatories
- Lab
- Reception
- Office (or could be fourth operatory)
- Second story location with ability to use downstairs for patient unable to use stairs (with cooperating dental office downstairs)
- Lots of natural light and operable windows
- Shared bathrooms and waiting area

\$2.05/SF NNN (NNNs estimated at \$.30/SF)



FOR MORE INFORMATION
CONTACT EXCLUSIVE
LISTING AGENTS

Carol Lezin
831.247.2610 cell
clezin@jrparrish.com
CaIBRE# 00878937

JR PARRISH COMMERCIAL REAL ESTATE • jrparrish.com



JR Parrish

COMMERCIAL REAL ESTATE

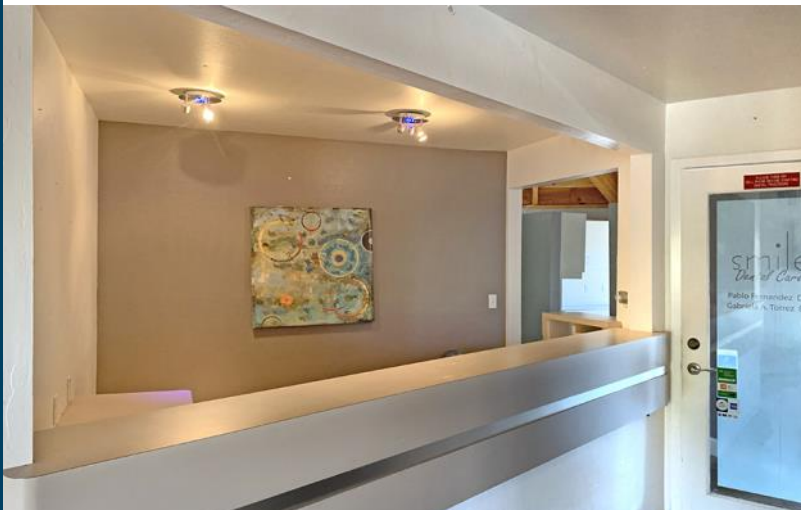
jrparish.com

MAIN OFFICE
831.476.2222

FAX
831.464.5818

9000 Soquel Ave
Suite 200
Santa Cruz, CA 95062

PHOTOS



FOR MORE INFORMATION
CONTACT EXCLUSIVE
LISTING AGENTS

Carol Lezin
831.247.2610 cell
clezin@jrparish.com
CaBRE# 00878937