



J.R. Parrish

COMMERCIAL REAL ESTATE

jrparrish.com

MAIN OFFICE

831.476.2222

FAX

831.464.5818

9000 Soquel Ave
Suite 200
Santa Cruz, CA 95062

FOR MORE INFORMATION
CONTACT EXCLUSIVE
LISTING AGENTS

Jackie Copriviza
831.476.2222 x101
831.234.0462 cell
jcopriv@gmail.com
DRE# 00894596

FOR SALE DEVELOPMENT OPPORTUNITY

Call for pricing!



5 6 3 0 S O Q U E L D R I V E • S O Q U E L , C A

- 3.35 Acres
- Building Area: 14,630 square feet total
- 4,736 SF Church Sanctuary
- 9,984 SF Administrative Building
- Current Zoning: PF – Public Facility
- Location: Easy Access to Highway 1 off of the Park Avenue Exit. Flat site with excellent ingress and egress on Soquel Drive



JR Parrish

COMMERCIAL REAL ESTATE

jrparish.com

MAIN OFFICE

831.476.2222

FAX

831.464.5818

9000 Soquel Ave

Suite 200

Santa Cruz, CA 95062

FOR MORE INFORMATION

CONTACT EXCLUSIVE

LISTING AGENT

Jackie Copriviza

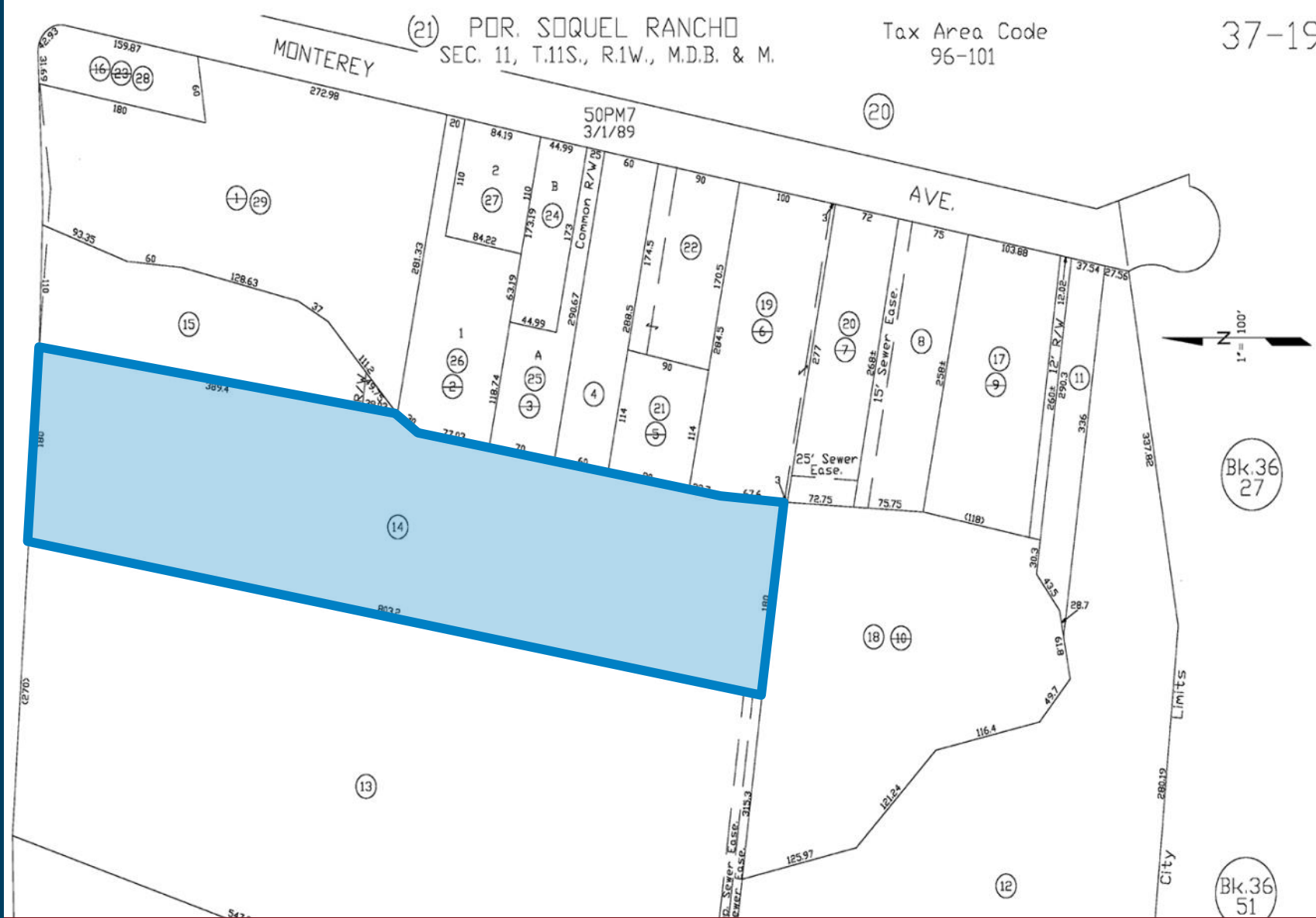
831.476.2222 x101

831.234.0462 cell

jcopriv@gmail.com

DRE# 00894596

SITE PLAN





J.R. Parrish

COMMERCIAL REAL ESTATE

jrparrish.com

MAIN OFFICE
831.476.2222

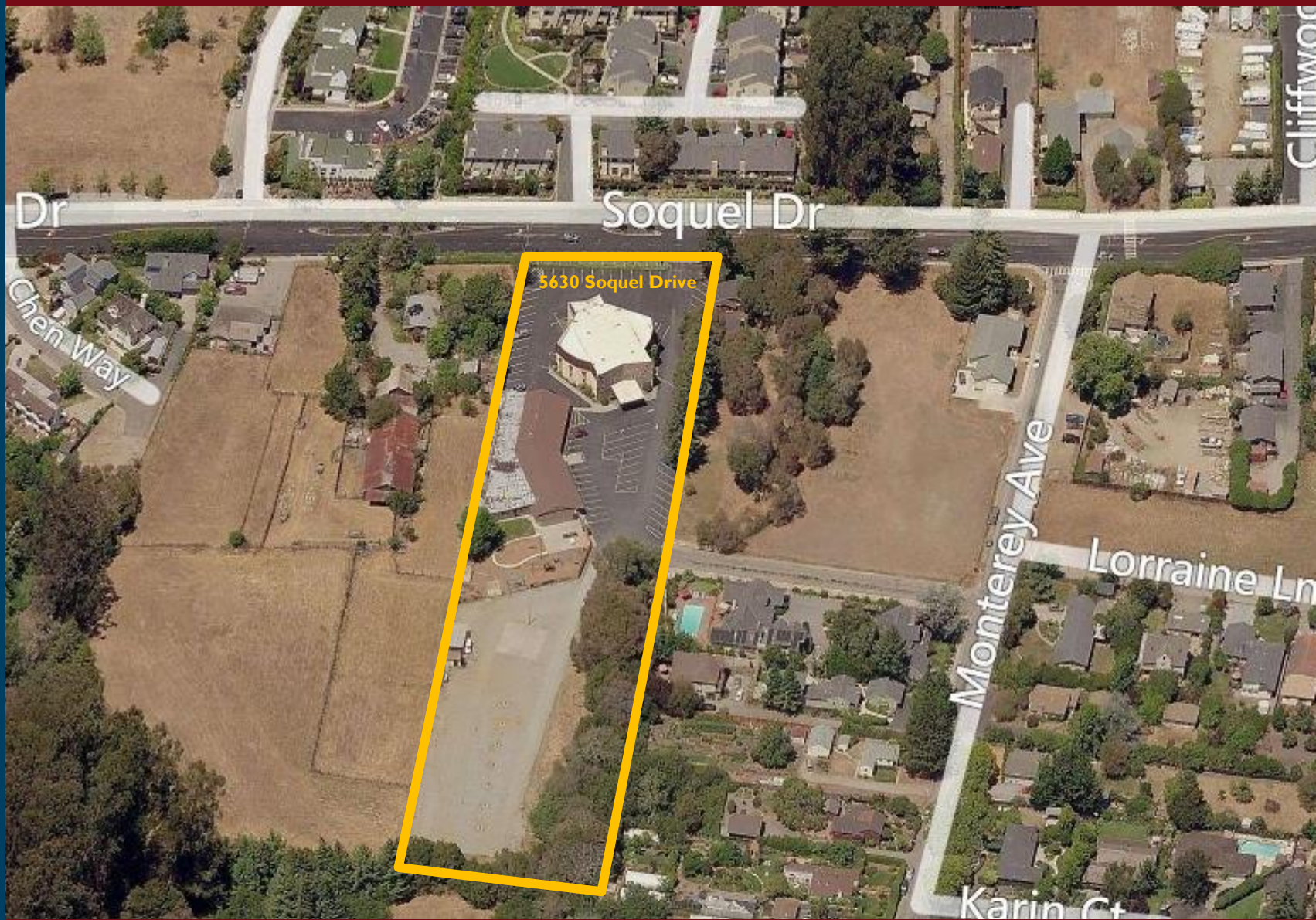
FAX
831.464.5818

9000 Soquel Ave
Suite 200
Santa Cruz, CA 95062

FOR MORE INFORMATION
CONTACT EXCLUSIVE
LISTING AGENT

Jackie Copriviza
831.476.2222 x101
831.234.0462 cell
jcopriv@gmail.com
DRE# 00894596

AERIAL MAP



JR PARRISH COMMERCIAL REAL ESTATE • jrparrish.com



J.R. Parrish

COMMERCIAL REAL ESTATE

jrparrish.com

MAIN OFFICE
831.476.2222

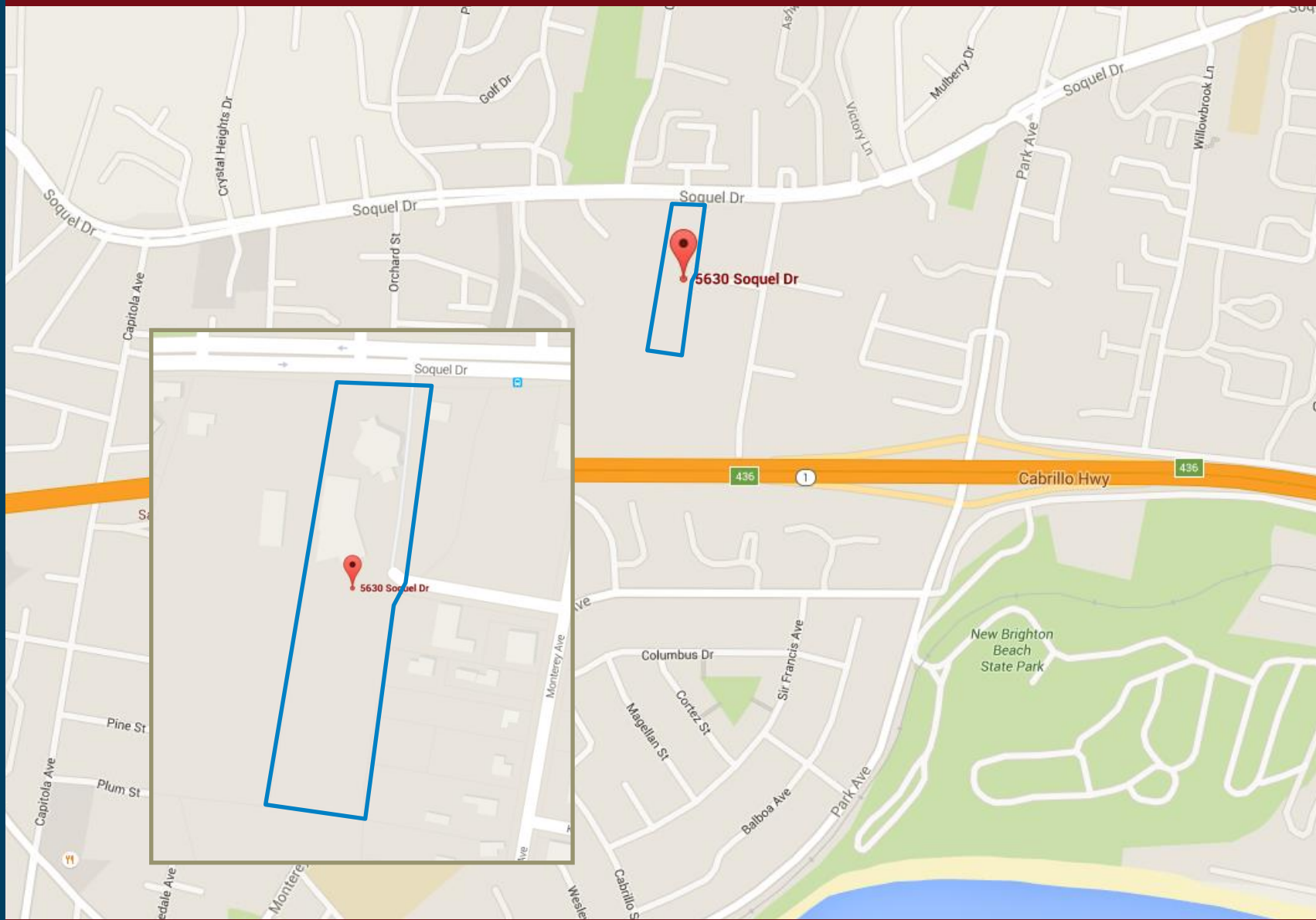
FAX
831.464.5818

9000 Soquel Ave
Suite 200
Santa Cruz, CA 95062

FOR MORE INFORMATION
CONTACT EXCLUSIVE
LISTING AGENT

Jackie Copriviza
831.476.2222 x101
831.234.0462 cell
jcopriv@gmail.com
DRE# 00894596

AERIAL MAP



JR PARRISH COMMERCIAL REAL ESTATE • jrparrish.com