

FOR LEASE OFFICE SPACE

1100 WATER ST. SECOND FLOOR



COMMERCIAL REAL ESTATE

jrparrish.com

MAIN OFFICE
831.476.2222

FAX
831.464.5818

9000 Soquel Ave
Suite 200
Santa Cruz, CA 95062

FOR MORE INFORMATION
CONTACT EXCLUSIVE
LISTING AGENT

Megan Gooch
831.476.2222 x104
831.359.2589 cell
megan@jrparrish.com
DRE# 02006313

Jackie Copriviza
831.476.2222 x101
831.234.0462 cell
jcopriv@gmail.com
DRE# 00894586



PROPERTY FEATURES

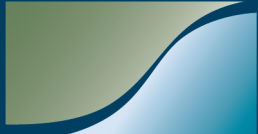
- ± 3,272 SF Available
- Divisible to approx. 800 SF
- Second Floor (No Elevator)
- Several Size Options
- Corner of Water St. & Seabright Ave.
- Central Location
- Great Visibility
- On-Site Parking
- First floor is occupied by Shoreline Property Management

ASKING \$1.75 PSF Gross

FOR LEASE

INTERIOR PICTURES

1100 WATER ST. SECOND FLOOR



J.R. Parrish

COMMERCIAL REAL ESTATE

jrparrish.com

MAIN OFFICE

831.476.2222

FAX

831.464.5818

9000 Soquel Ave

Suite 200

Santa Cruz, CA 95062

FOR MORE INFORMATION
CONTACT EXCLUSIVE
LISTING AGENT

Megan Gooch

831.476.2222 x104

831.359.2589 cell

megan@jrparrish.com

DRE# 02006313

Jackie Copriviza

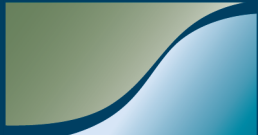
831.476.2222 x101

831.234.0462 cell

jcopriv@gmail.com

DRE# 00894586





J.R. Parrish

COMMERCIAL REAL ESTATE

jrparrish.com

MAIN OFFICE

831.476.2222

FAX

831.464.5818

9000 Soquel Ave

Suite 200

Santa Cruz, CA 95062

FOR MORE INFORMATION

CONTACT EXCLUSIVE

LISTING AGENT

Megan Gooch

831.476.2222 x104

831.359.2589 cell

megan@jrparrish.com

DRE# 02006313

Jackie Copriviza

831.476.2222 x101

831.234.0462 cell

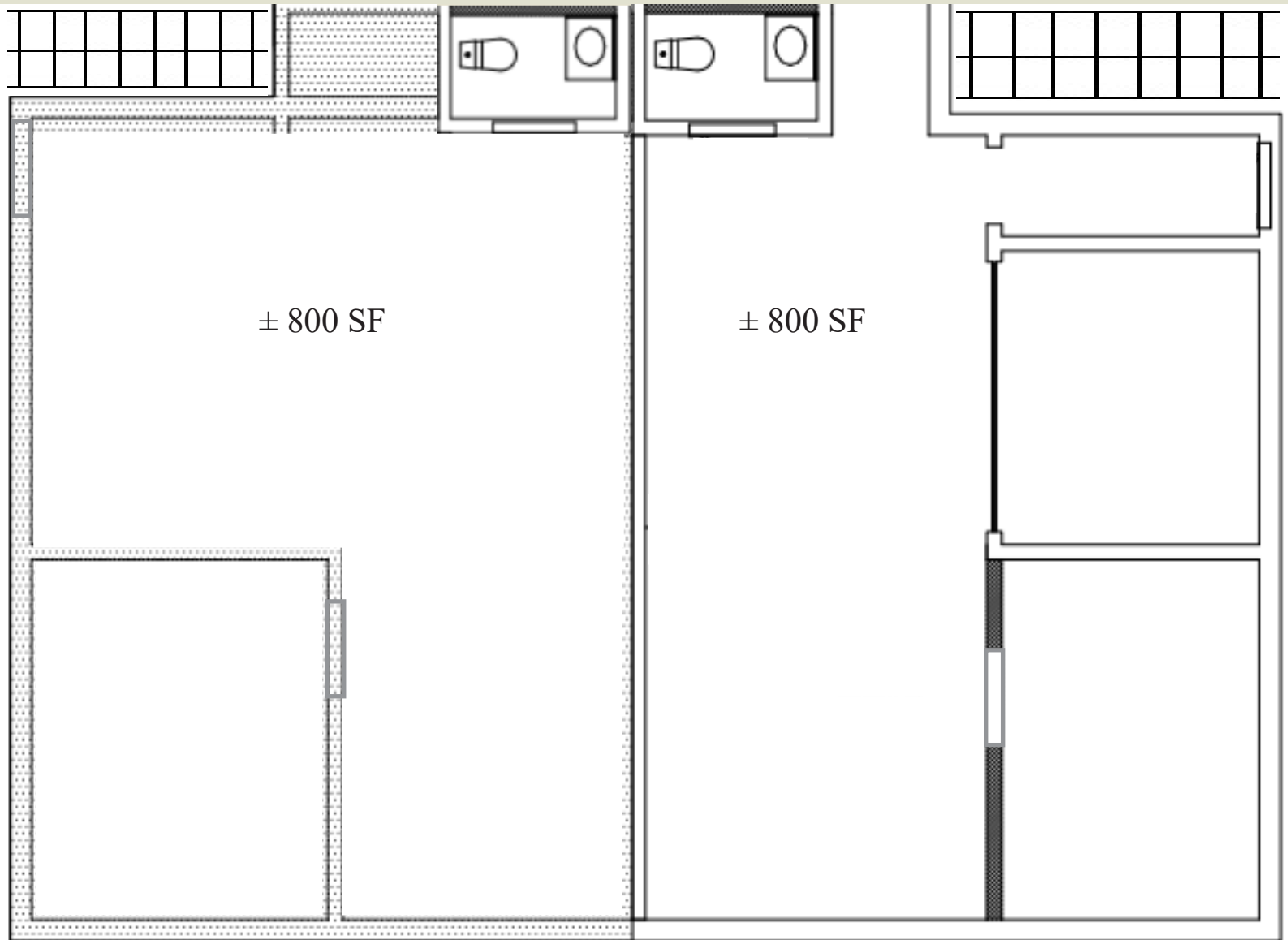
jcopriv@gmail.com

DRE# 00894586

FOR LEASE

FLOOR PLAN

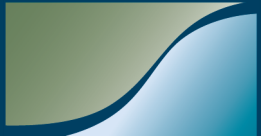
1100 WATER ST. SECOND FLOOR



SEABRIGHT AVE.

WATER ST.

FRONT HALF (TWO SIDES)



J.R. Parrish

COMMERCIAL REAL ESTATE

jrparrish.com

MAIN OFFICE

831.476.2222

FAX

831.464.5818

9000 Soquel Ave
Suite 200
Santa Cruz, CA 95062

FOR MORE INFORMATION
CONTACT EXCLUSIVE
LISTING AGENT

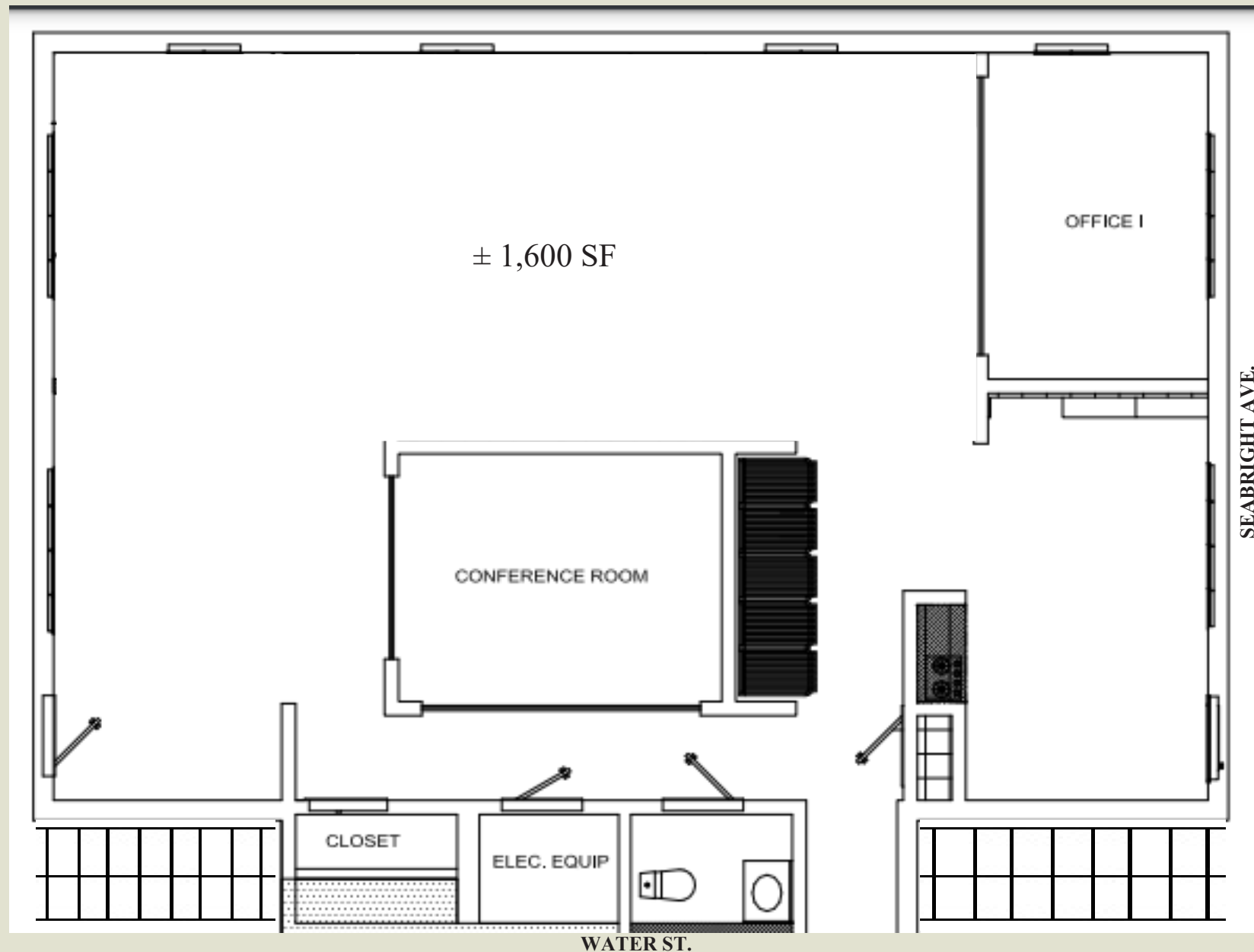
Megan Gooch
831.476.2222 x104
831.359.2589 cell
megan@jrparrish.com
DRE# 02006313

Jackie Copriviza
831.476.2222 x101
831.234.0462 cell
jcopriv@gmail.com
DRE# 00894586

FOR LEASE

FLOOR PLAN

1100 WATER ST. SECOND FLOOR



BACK HALF (ONE SPACE)