



J.R. Parrish

COMMERCIAL REAL ESTATE

jrparrish.com

MAIN OFFICE
831.476.2222

FAX
831.464.5818

9000 Soquel Ave
Suite 200
Santa Cruz, CA 95062

FOR MORE INFORMATION
CONTACT EXCLUSIVE
LISTING AGENTS

Matt Shelton
831.476.2222 x106
831.247.1510 cell
matt@jrparrish.com
DRE# 00879054

Rachael Shelton
831.588.8383
rachael@jrparrish.com
DRE# 01916810

FOR SALE OFFICE BUILDING



240 WESTGATE DRIVE · WATSONVILLE, CA

PROPERTY FEATURES

- 16,300 square feet rentable
- APN: 015-111-62
- Very close to Highway One, off the Airport Blvd exit
- First time on market, the building is ideal for an owner user as it is fully leased with short term tenancies

\$4,500,000.00



JR Parrish

COMMERCIAL REAL ESTATE

jrparrish.com

MAIN OFFICE
831.476.2222

FAX
831.464.5818

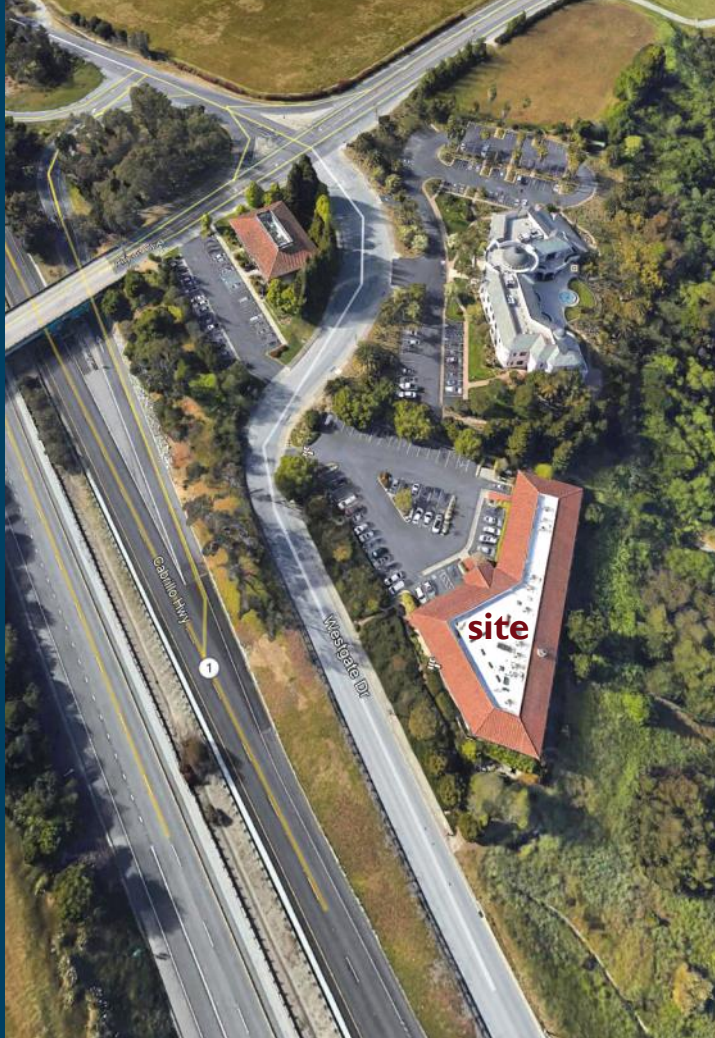
9000 Soquel Ave
Suite 200
Santa Cruz, CA 95062

FOR MORE INFORMATION
CONTACT EXCLUSIVE
LISTING AGENTS

Matt Shelton
831.476.2222 x106
831.247.1510 cell
matt@jrparrish.com
DRE# 00879054

Rachael Shelton
831.588.8383
rachael@jrparrish.com
DRE# 01916810

PHOTOS





JR Parrish

COMMERCIAL REAL ESTATE

jrparish.com

MAIN OFFICE
831.476.2222

FAX
831.464.5818

9000 Soquel Ave
Suite 200
Santa Cruz, CA 95062

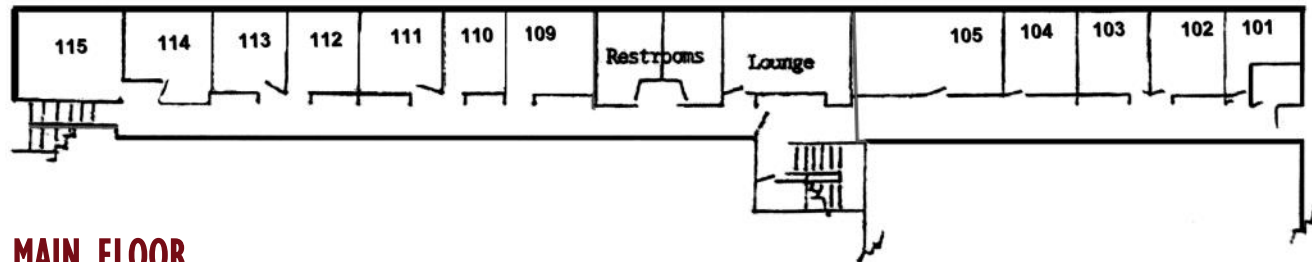
FOR MORE INFORMATION
CONTACT EXCLUSIVE
LISTING AGENTS

Matt Shelton
831.476.2222 x106
831.247.1510 cell
matt@jrparish.com
DRE# 00879054

Rachael Shelton
831.588.8383
rachael@jrparish.com
DRE# 01916810

FLOOR PLAN

LOWER FLOOR



MAIN FLOOR

