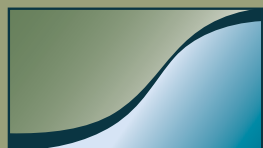


FOR LEASE Newer Class-A Office Space

150 Westridge Drive • Watsonville CA



J.R. Parrish

COMMERCIAL REAL ESTATE

For More Information Contact Exclusive Agent:

Gregg Walsh, SIOR

831.476.2222 Ext. 102

831.252.2585 Cell

gsw200@aol.com

DRE# 01013102

9000 SOQUEL AVE SUITE 200 SANTA CRUZ CA 95062 FAX 831.316.7988

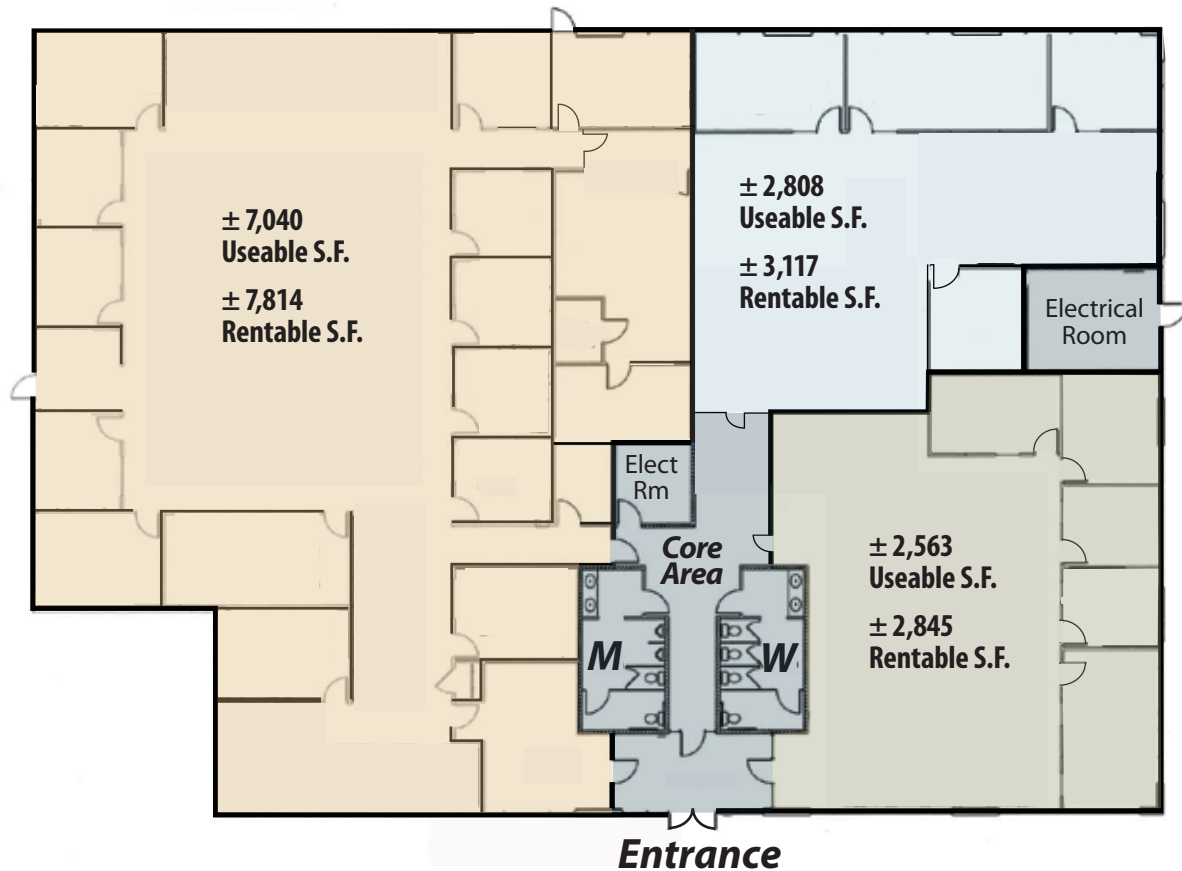
- ± 13,776 S.F.
- Fully Improved, High Quality, Single Story Office Building
- Westridge Drive Frontage
- Located in Prominent and Established Office Park

- Divisible to ± 2,845 S.F.
- 3.5/1,000 Parking
- Easy Access to Hwy 1 and Area's Best Amenities

Priced At: \$1.50 NNN

www.jrparrish.com

FLOOR PLAN 150 Westridge Drive • Watsonville CA



COMMERCIAL REAL ESTATE

For More Information Contact Exclusive Agent:

Gregg Walsh, SIOR

831.476.2222 Ext. 102

831.252.2585 Cell

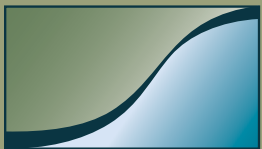
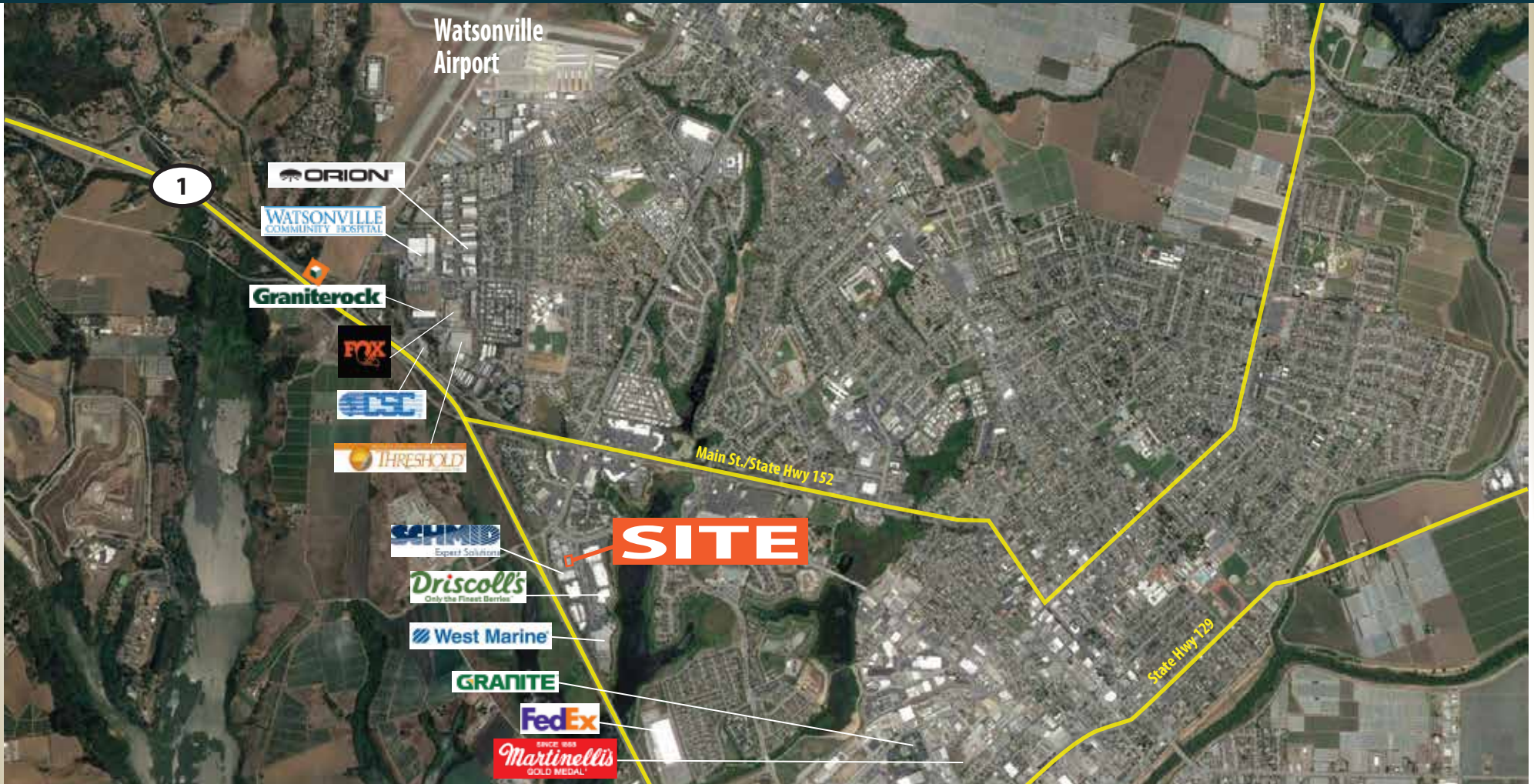
gsw200@aol.com

DRE# 01013102

9000 SOQUEL AVE SUITE 200 SANTA CRUZ CA 95062 FAX 831.316.7988 www.jrparrish.com

© 2022 J.R. Parrish. All rights reserved. The information contained in this communication is strictly confidential. This information has been obtained from sources believed to be reliable but has not been verified. No warranty or representation, express or implied is made as to the condition of the property (or properties) referenced herein or as to the accuracy or completeness of the information contained herein, and same is submitted subject to errors, omissions, change of price, rental or other conditions, withdrawal without notice, and to any special listing conditions imposed by the property owner(s). Any projections, opinions or estimates are subject to uncertainty and do not signify current or future property performance.

AERIAL MAP 150 Westridge Drive • Watsonville CA



J.R. Parrish

COMMERCIAL REAL ESTATE

For More Information Contact Exclusive Agent:

Gregg Walsh, SIOR

831.476.2222 Ext. 102

831.252.2585 Cell

gsw200@aol.com

DRE# 01013102

9000 SOQUEL AVE SUITE 200 SANTA CRUZ CA 95062 FAX 831.316.7988 www.jrparrish.com

©2022 JR Parrish. All rights reserved. The information contained in this communication is strictly confidential. This information has been obtained from sources believed to be reliable but has not been verified. No warranty or representation, express or implied is made as to the condition of the property (or properties) referenced herein or as to the accuracy of completeness of the information contained herein, and same is submitted subject to errors, omissions, change of price, rental or other conditions, withdrawal without notice, and to any special listing conditions imposed by the property owner(s). Any projections, opinions or estimates are subject to uncertainty and do not signify current or future property performance.

