

J.R. Parrish Inc.
COMMERCIAL REAL ESTATE

jrparrish.com

MAIN OFFICE
831.476.2222
FAX
831.464.5818

9000 Soquel Ave
Suite 200
Santa Cruz, CA 95062

FOR MORE INFORMATION
CONTACT EXCLUSIVE
LISTING AGENT

Matt Shelton
831.247.1510
matt@jrparrish.com
DRE# 00879054

Rachael Shelton
831.588.8383
rachael@jrparrish.com
DRE# 01916810

FOR SALE DOWNTOWN OFFICE BUILDING



777 CHESTNUT STREET • SANTA CRUZ, CA

PROPERTY FEATURES

- 1,363 ± SF
- Land area ± 5,401 SF
- Centrally located Downtown Santa Cruz Office Building
- Dedicated 5 space parking lot

- Four privates with windows / sliding glass doors
- Zoning is PA
- Possible residential use
- Excellent Owner/User Site

Listed for \$1,282,500.00

JR Parrish Inc.
COMMERCIAL REAL ESTATE

jrparrish.com

MAIN OFFICE
831.476.2222
FAX
831.464.5818

9000 Soquel Ave
Suite 200
Santa Cruz, CA 95062

PHOTOS



JR PARRISH COMMERCIAL REAL ESTATE • jrparrish.com



COMMERCIAL REAL ESTATE

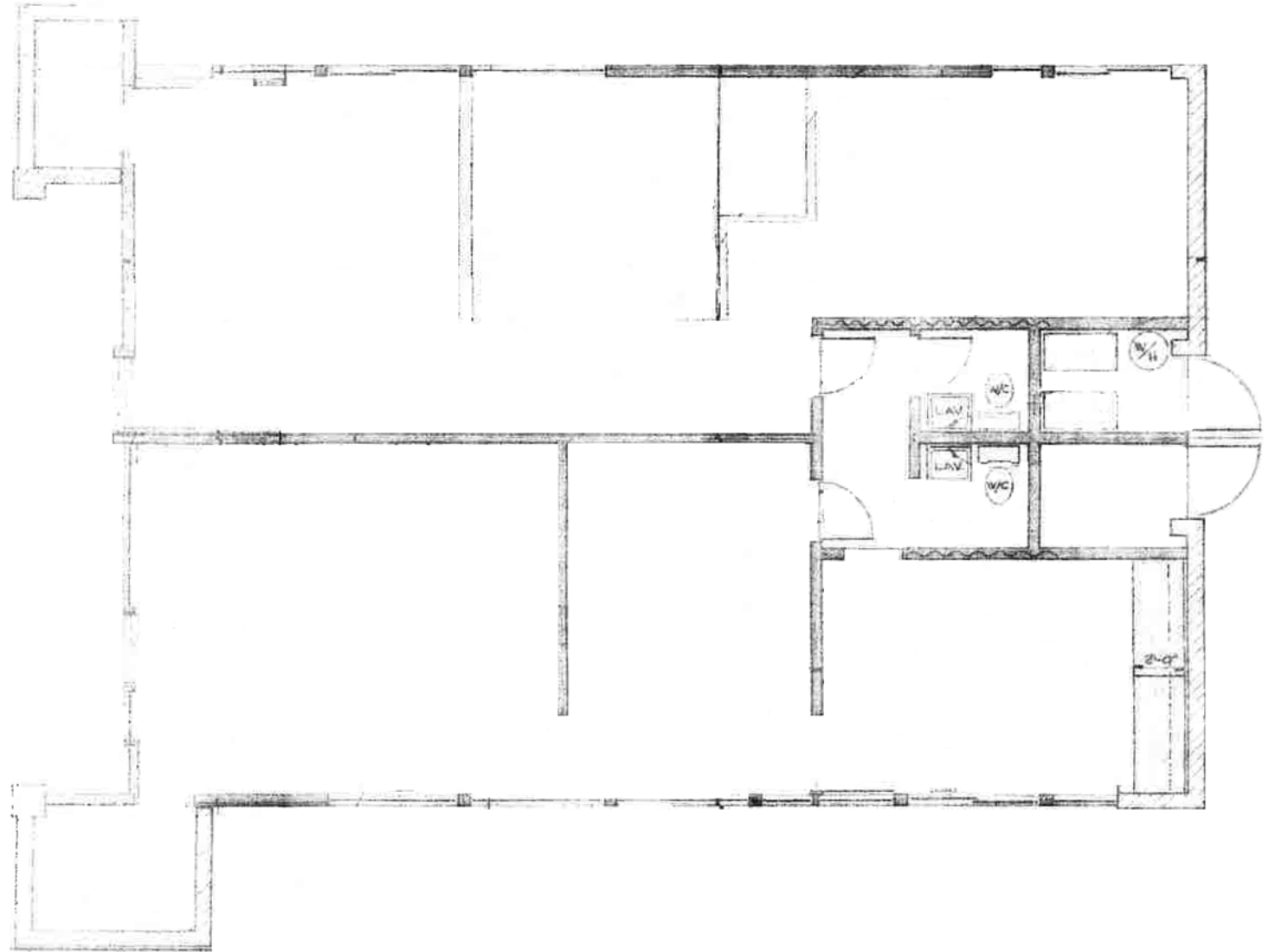
jrparrish.com

MAIN OFFICE
831.476.2222

FAX
831.464.5818

9000 Soquel Ave
Suite 200
Santa Cruz, CA 95062

FLOORPLAN





COMMERCIAL REAL ESTATE

jrparish.com

MAIN OFFICE
831.476.2222
FAX
831.464.5818

9000 Soquel Ave
Suite 200
Santa Cruz, CA 95062

FOR MORE INFORMATION
CONTACT EXCLUSIVE
LISTING AGENT

Matt Shelton
831.247.1510
matt@jrparish.com
DRE# 00879054

Rachael Shelton
831.588.8383
rachael@jrparish.com
DRE# 01916810

MAP

