

J.R. Parrish Inc.
COMMERCIAL REAL ESTATE

jrparish.com

MAIN OFFICE

831.476.2222

2959 Park Avenue
Suite E
Soquel, CA 95073

FOR MORE
INFORMATION
CONTACT
EXCLUSIVE
LISTING AGENT

Matt Shelton
831.247.1510
matt@jrparish.com
DRE#00879054

Carol Lezin
831.247.2610
clezin@jrparish.com
DRE#00878937

FOR LEASE

COMMERCIAL OFFICE BUILDING



3050 PAUL SWEET ROAD • SANTA CRUZ, CA

- Turnkey Condition
- Prime Freeway Access
- Secured Parking Area
- Convient Roll-Up Door
- Modified Gross Lease
- \$1.65 Per Square Foot
- New Fenced Parking Lot
- 4052 Square Feet of Flex Space



COMMERCIAL REAL ESTATE

jrparrish.com

MAIN OFFICE

831.476.2222

2959 Park Avenue
Suite E
Soquel, CA 95073

FOR MORE
INFORMATION
CONTACT
EXCLUSIVE
LISTING AGENT

Matt Shelton
831.247.1510
matt@jrparrish.com
DRE#00879054

Carol Lezin
831.247.2610
clezin@jrparrish.com
DRE#00878937

FENCED PARKING LOT



3050 PAUL SWEET ROAD • SANTA CRUZ, CA

JR PARRISH COMMERCIAL REAL ESTATE jrparrish.com



COMMERCIAL REAL ESTATE

jrparrish.com

MAIN OFFICE

831.476.2222

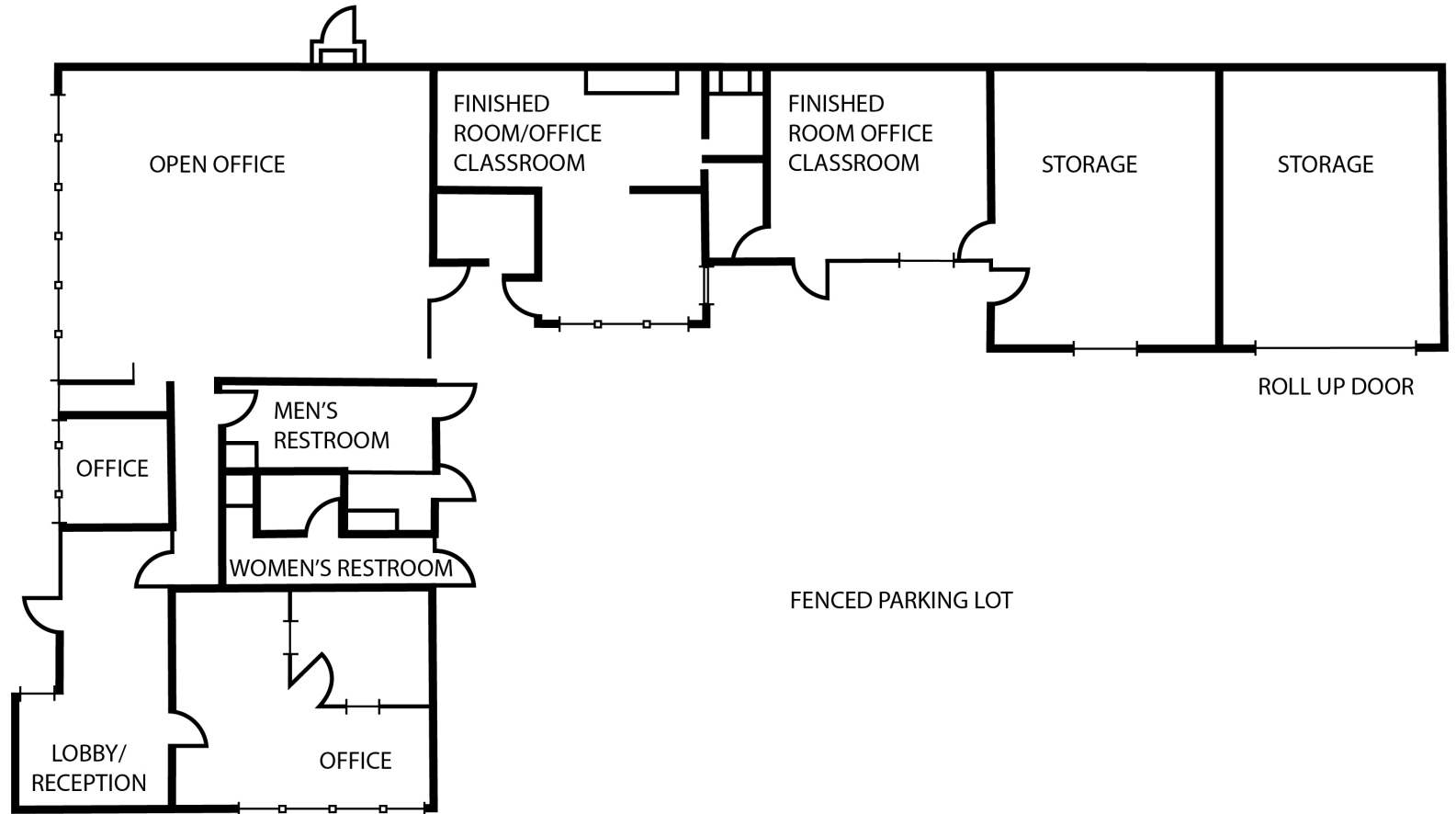
2959 Park Avenue
Suite E
Soquel, CA 95073

FOR MORE
INFORMATION
CONTACT
EXCLUSIVE
LISTING AGENT

Matt Shelton
831.247.1510
matt@jrparrish.com
DRE#00879054

Carol Lezin
831.247.2610
clezin@jrparrish.com
DRE#00878937

FLOORPLAN



3050 PAUL SWEET ROAD • SANTA CRUZ, CA

JR PARRISH COMMERCIAL REAL ESTATE jrparrish.com



COMMERCIAL REAL ESTATE

jrparrish.com

MAIN OFFICE

831.476.2222

2959 Park Avenue
Suite E
Soquel, CA 95073

FOR MORE
INFORMATION
CONTACT
EXCLUSIVE
LISTING AGENT

Matt Shelton
831.247.1510
matt@jrparrish.com
DRE#00879054

Carol Lezin
831.247.2610
clezin@jrparrish.com
DRE#00878937

AERIAL VIEW



3050 PAUL SWEET ROAD • SANTA CRUZ, CA

JR PARRISH COMMERCIAL REAL ESTATE jrparrish.com

J.R. Parrish Inc.

COMMERCIAL REAL ESTATE

jrparrish.com

MAIN OFFICE

831.476.2222

2959 Park Avenue
Suite E
Soquel, CA 95073

FOR MORE
INFORMATION
CONTACT
EXCLUSIVE
LISTING AGENT

Matt Shelton
831.247.1510
matt@jrparrish.com
DRE#00879054

Carol Lezin
831.247.2610
clezin@jrparrish.com
DRE#00878937

AERIAL VIEW



3050 PAUL SWEET ROAD • SANTA CRUZ, CA

JR PARRISH COMMERCIAL REAL ESTATE jrparrish.com